

836 DOOR CLOSER

FOR USE ON TIMBER, METAL
AND ALUMINIUM DOORS

- Size 3 to 6 Spring Adjustable
- Door Sizes 950mm to 1450mm Wide
- Door Weight 60kg to 120kg
- 180 Degree Opening
- Non Handed
- Adjustable Back Check
- Delayed Action
- Parallel Arm Bracket
- Track Arm Application Available



BACK CHECK



DELAYED ACTION



PARALLEL ARM
BRACKET



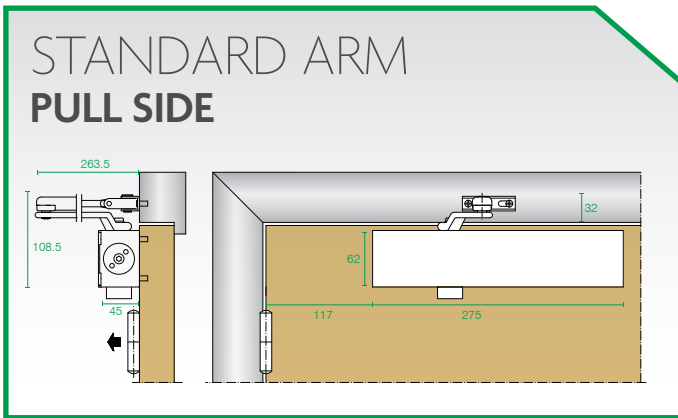
ADJUSTABLE
SPRING STRENGTH



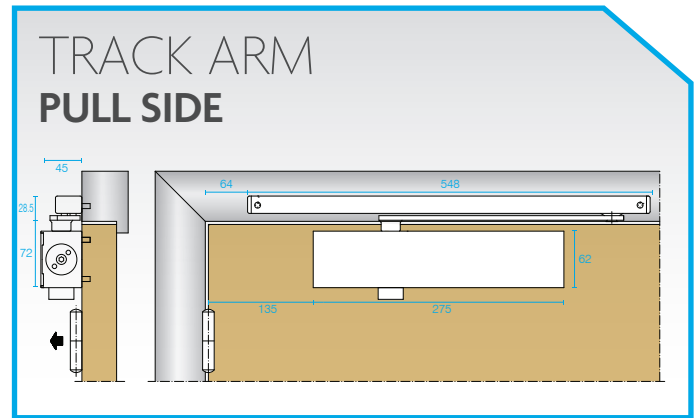
APPLICATIONS & FEATURES

The 836 premium door closer offers outstanding versatility with the power to match. Engineered from quality materials the 836 will provide years of maintenance free smooth operation, while maintaining functionality to suit almost any application.

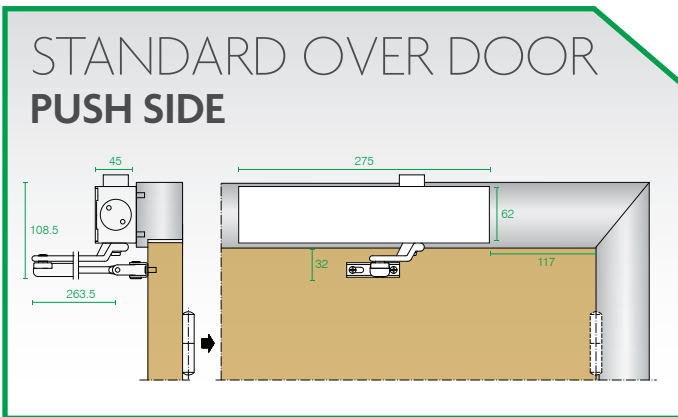
Standard Finishes: SIL = Silver, SSS = Satin Stainless Steel, PSS = Polished Stainless Steel



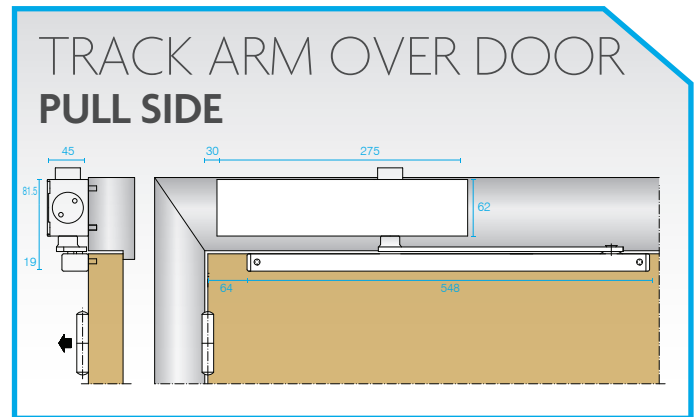
Provided the site conditions allow, an opening of 180 degrees is possible with this installation.



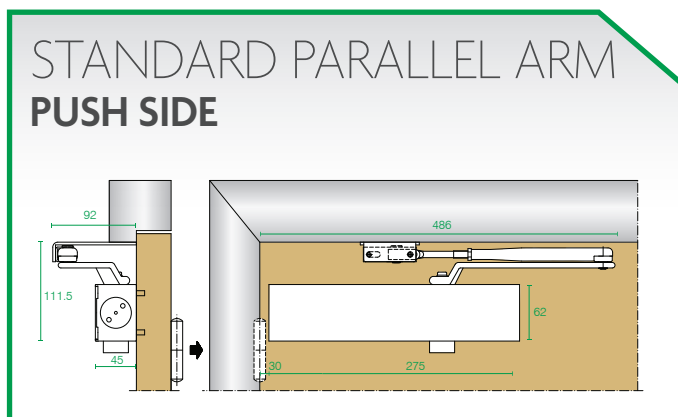
Provided the site conditions allow, an opening of 180 degrees is possible with this installation.



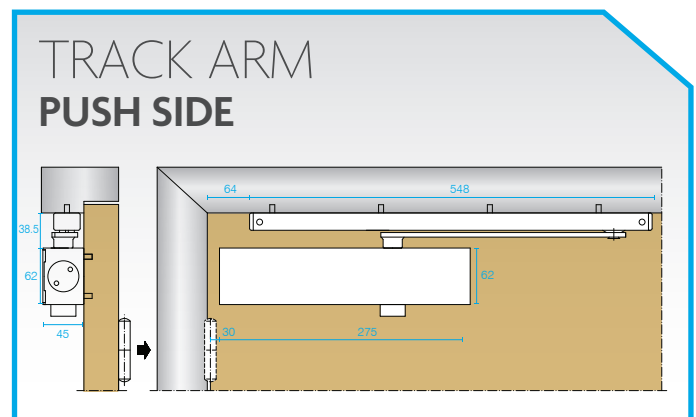
Provided the site conditions allow, an opening of 180 degrees is possible with this installation.



Provided the site conditions allow, an opening of 180 degrees is possible with this installation.



Provided the site conditions allow, an opening of 180 degrees is possible with this installation.



Provided the site conditions allow, an opening of 160 degrees is possible with this installation.

836 DOOR CLOSER ACCESSORIES



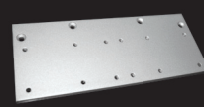
Stainless Steel Cover
SSS or PSS



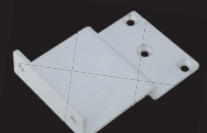
Standard Hold Open Arm



Track Arm Including
Hold Open SIL – SSS – PSS



Drop Plate



915 Parallel Bracket
with 28mm Drop Down